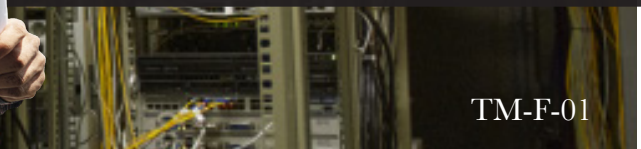


# TOUGHMesh

“ Wire basket  
made and  
supplied right! ”



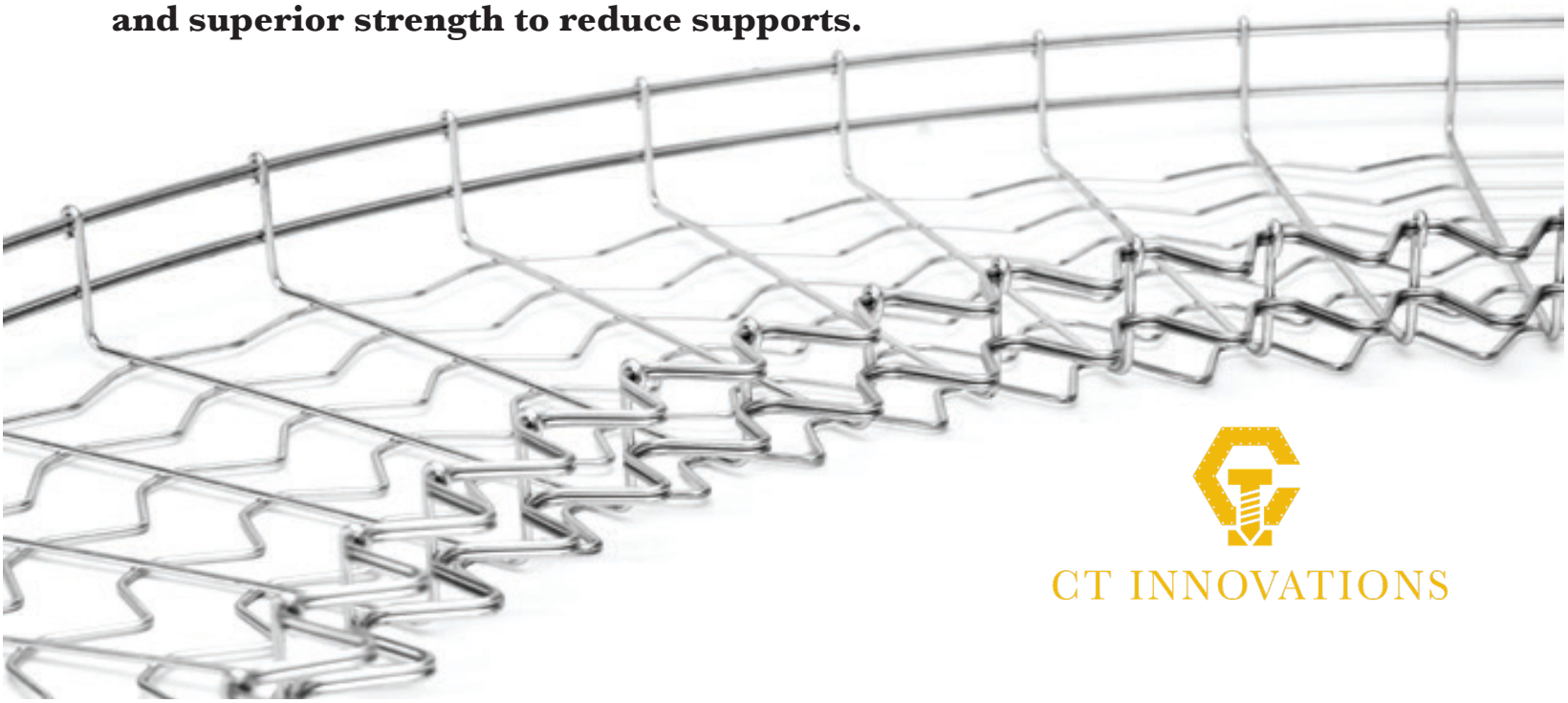
TM-F-01

## - Designed For Speed -

### Know the Facts:

- 1: Labor is the largest variable on any job site.
- 2: Project schedules determine profitability.

**Limit project exposure with intuitive Posi-Lok splice plates, Crimped-2-Go premade fittings, and superior strength to reduce supports.**



CT INNOVATIONS

# STRENGTH You Can See

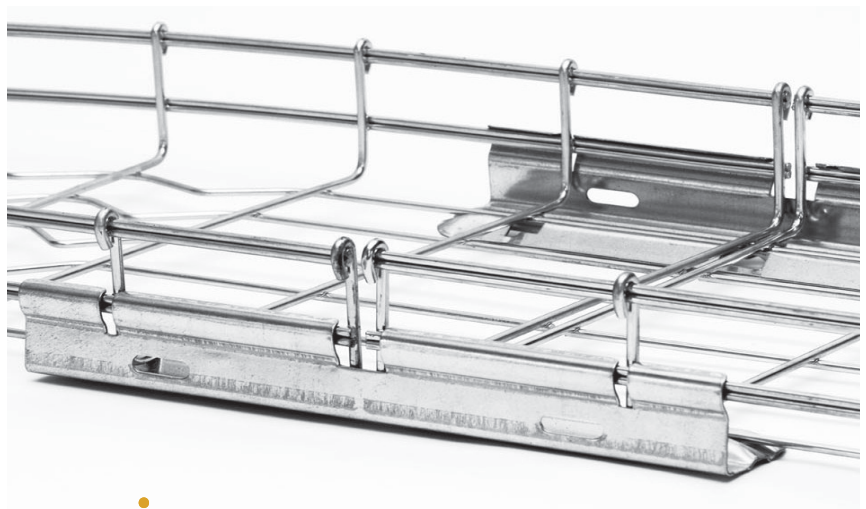


## Differentiation That Matters

Cable support products are often an afterthought and viewed as commodities, however in reality, they are pivotal components that can accelerate your project schedule or quickly derail it. Avoid the uncertainty and buy with confidence from industry professionals with over 100yrs real world experience. Deliver a successful schedule by partnering with a company that believes the customer is more important than the stock market and the product is ready when they need it.

## Innovation That Applies

- Safe-T-Curl
- Crimped-2-Go Fittings
- Posi-Lok Splice Plates
- Superior Strength
- Ultimate Protection
- Vast Size Range
- Intuitive Installation
- Ready To Ship



## For More Information

Please visit our website or contact your local agent:



✉ [support@toughinnovations](mailto:support@toughinnovations)

☎ (618) 514-1796

🌐 [www.toughinnovations.com](http://www.toughinnovations.com)



CT INNOVATIONS